

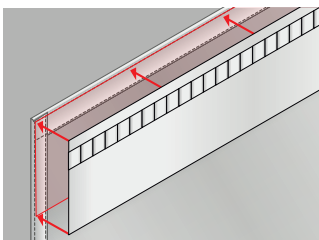
2. Sewing the hook band onto the curtain.

Sew the hook band onto the curtain as shown, making sure it is flush with the upper edge of the curtain.

The hook band is available with two different heights:

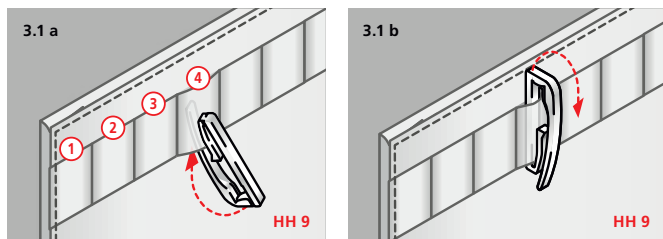
- Choose the hook tape with a height of **3.8 cm** for lightweight materials and smaller curtain heights.
- Always use the **7.8 cm** hook tape for heavier materials and normal curtain heights.

NOTE: Do not fold the hook tape; this will ensure the waves remain even and smooth.

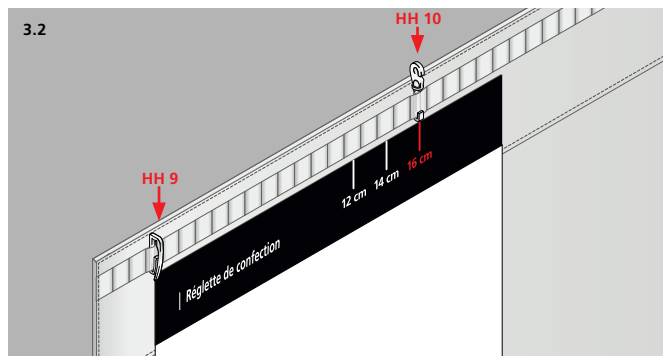


3. Inserting the hooks.

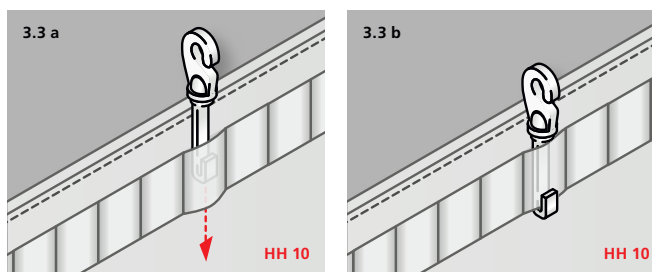
- 3.1 Insert the first hook (HH 9) into the 4th loop in the hook tape by sliding it back-to-front into the loop from the bottom (b) and then turning it full circle (b). Now insert an HH 9 hook into the fourth from last loop at the other end of the hook tape. Positioning the first and last hooks in the 4th loop from each end allows the curtain material to hide the outermost gliders of the 'Curve system so they cannot be seen when the system is in place.



- 3.2 Using the Hinno 'Curve ruler. Each loop on the hook tape is exactly one centimetre wide. Use the ruler to position the other hooks (rotatable hook HH 10) in the right loops at the right distance (in accordance with the wave length you have chosen).

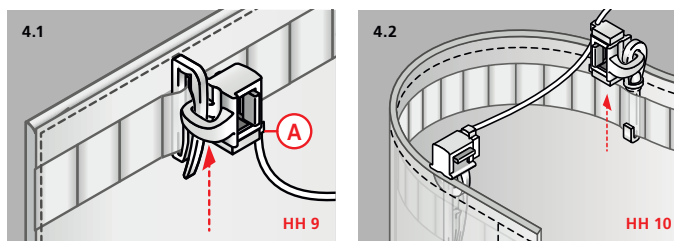


- 3.3 Once you have determined the preferred spacing, insert the second hook (HH 10) from the top (a) into the loop on the hook tape and secure it as shown (b). Repeat the process for the other hooks.



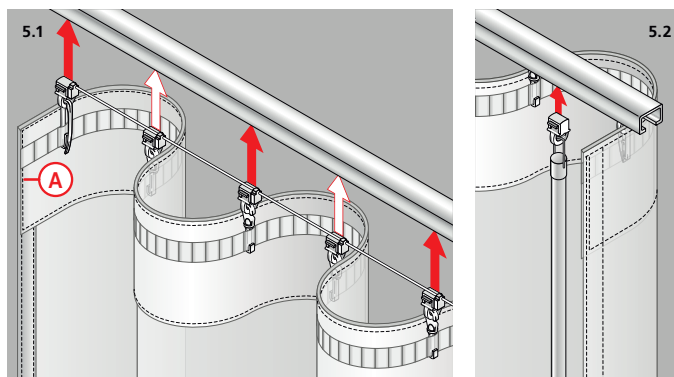
4. Inserting the gliders.

- 4.1 Insert the first glider into the first hook (HH 9) from the side and slide it up to the top. **Important:** The 'Curve cord (A) must be fastened to the bottom end of the glider as shown in the illustration. Repeat this process at the end of the fitting process when fastening the last glider to the last hook (HH 9), whereby the 'Curve cord at that point must be attached to the top end of the glider!
- 4.2 Insert the second glider into the second hook (HH 10) from the side. As HH 10 is a rotatable hook, the position of the 'Curve cord here and at every other rotatable hook is irrelevant. Fitting this glider creates the first wave.



5. Installation in the curtain rail.

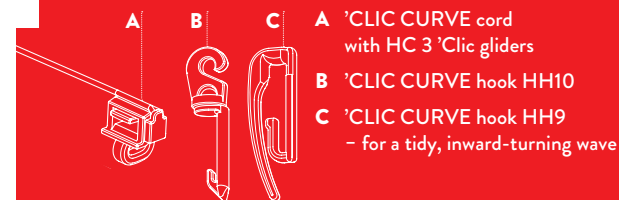
- 5.1 Position the system so that the ends of the material (A) are facing the window. Click the first glider into the curtain rail, tighten the cord and continue with the third glider. Always leave every other glider out of the rail. **IMPORTANT:** Make sure that the cord fastenings on the gliders are always facing in the same direction. You can now comfortably click the remaining gliders into place.
- 5.2 We recommend you use a curtain draw rod to operate the system: Simply use a 'Clic glider to attach the draw rod to the first or last wave.



80 mm

Clic CURVE 2.0

Measurement and installation



HINNO 

HINNO AG + Blegistrasse 19 + CH-6340 Baar
 phone: +41 (0)41 377 38 77
 fax: +41 (0)41 377 38 60
 info@hinno.ch + www.hinno.ch



09_2022_V1

80 mm Ruler

Wave 12 cm

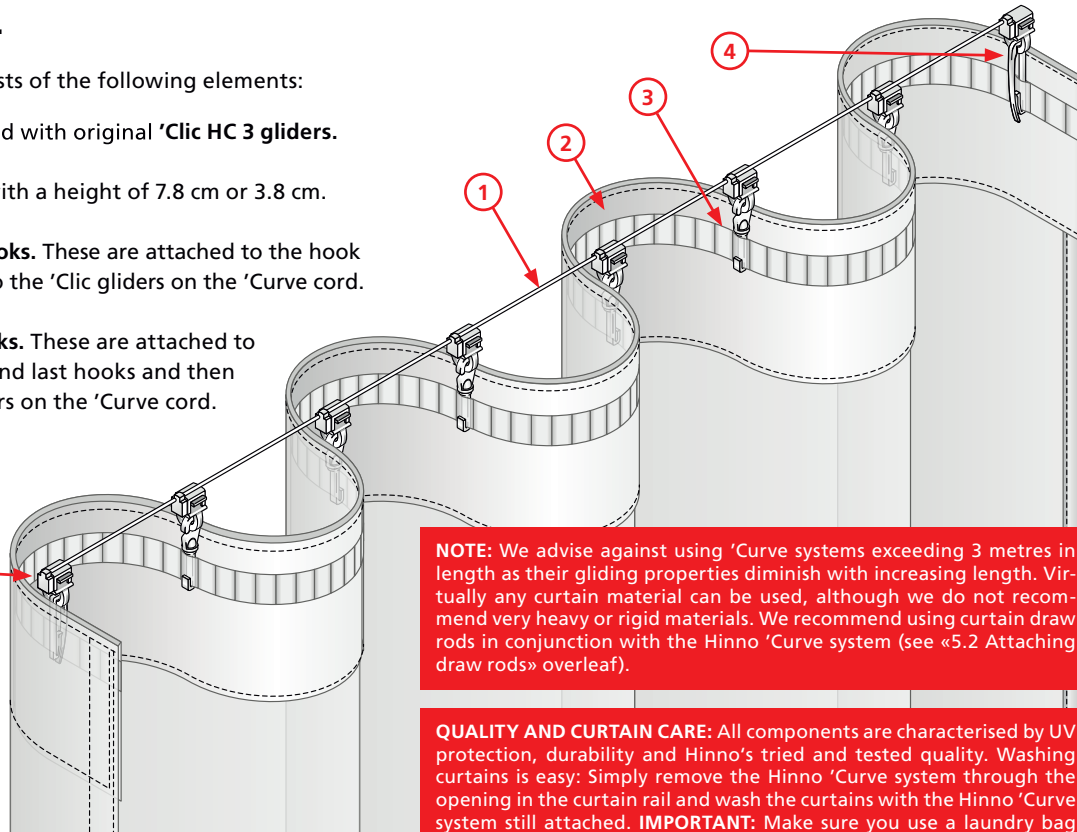
14 cm

16 cm

System components.

The Hinno 'Curve system consists of the following elements:

- ① The Hinno 'Curve cord fitted with original 'Clic HC 3 gliders.
- ② The hook tape. Available with a height of 7.8 cm or 3.8 cm.
- ③ The Hinno 'Curve HH 10 hooks. These are attached to the hook tape and then inserted into the 'Clic gliders on the 'Curve cord.
- ④ The Hinno 'Curve HH 9 hooks. These are attached to the hook tape as the first and last hooks and then inserted into the 'Clic gliders on the 'Curve cord.



NOTE: We advise against using 'Curve systems exceeding 3 metres in length as their gliding properties diminish with increasing length. Virtually any curtain material can be used, although we do not recommend very heavy or rigid materials. We recommend using curtain draw rods in conjunction with the Hinno 'Curve system (see «5.2 Attaching draw rods» overleaf).

QUALITY AND CURTAIN CARE: All components are characterised by UV protection, durability and Hinno's tried and tested quality. Washing curtains is easy: Simply remove the Hinno 'Curve system through the opening in the curtain rail and wash the curtains with the Hinno 'Curve system still attached. **IMPORTANT:** Make sure you use a laundry bag with a pull cord as the cords can otherwise become entangled.

Dimensions table.

- Curtain rail
- 'Curve cord
- Curtain material in waves

cm	0	10	20	30	40	50	60	70	80	90	100	110	120	130	140	150	160	170	180	190	200	210	220	230	240	250	260	270	280	290	300
Cord length in cm					40	56	72	88	104	120	136	152	168	184	200	216	232	248	264	280	296	312									
Number of gliders/hooks					6	8	10	12	14	16	18	20	22	24	26	28	30	32	34	36	38	40									

1. RAIL LENGTH.

Rail length	cm	40-56	57-72	73-88	89-104	105-120	121-136	137-152	153-168	169-184	185-200	201-216	217-232	233-248	249-264	265-280	281-296	297-312
-------------	----	-------	-------	-------	--------	---------	---------	---------	---------	---------	---------	---------	---------	---------	---------	---------	---------	---------

2. CORRECT LENGTH OF 'CURVE CORD. (Recommendation: Always round off the cord length to an even number of gliders.)

Cord length	cm	56	72	88	104	120	136	152	168	184	200	216	232	248	264	280	296	312
Gliders/hooks	Qty.	8	10	12	14	16	18	20	22	24	26	28	30	32	34	36	38	40

3. REQUIRED CURTAIN MATERIAL LENGTH. (Specifications include 7 cm for the two ends of the system but do not include additional material for seams.)*

A: 12 cm wave	cm	91	115	139	163	187	211	235	259	283	307	331	355	379	403	427	451	475
B: 14 cm wave	cm	105	133	161	189	217	245	273	301	329	357	385	413	441	469	497	525	553
C: 16 cm wave	cm	119	151	183	215	247	279	311	343	375	407	439	471	503	535	567	599	631

* You need to add the amount of material needed to sew the seams to the overall length.

Calculating how much material you need: (Number of gliders - 1) × wave length + 7 cm = material required + the material needed to sew the seams
 (14-1) × 16 cm + 7 cm = 215 cm + material for sewing the seams

1. Determining the length of the 'Curve cord and the material required.

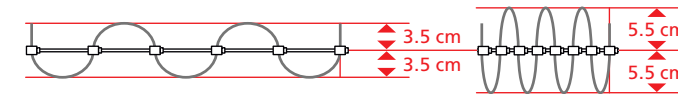
Calculating the dimensions and how much material you will need is easy with the Hinno 'Curve dimensions table:

1.1 MEASURE THE RAIL LENGTH. First of all, measure the length of your curtain rail.

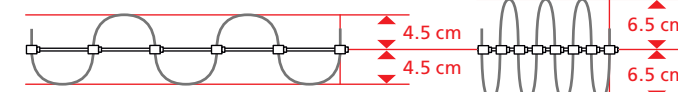
1.2 DETERMINE THE LENGTH OF THE 'CURVE CORD. Transfer the length of the curtain rail to the 'Curve cord. Now round up the length so that it equals an even number of gliders on the 'Curve cord. For example: A length of 100 cm would be rounded up to 104 cm (14 gliders). The 'Curve cord would be cut behind the 14th glider. Using an even number of gliders makes the ends of the system face the same way (towards the window) which looks neater.

1.3 CHOOSING THE WAVE SIZE. We recommend either 12, 14 or at the most 16 cm of material for each wave. Make sure there is enough depth between the curtain rail and the window (e.g.: at least 7.5 cm for a 16 cm wave).

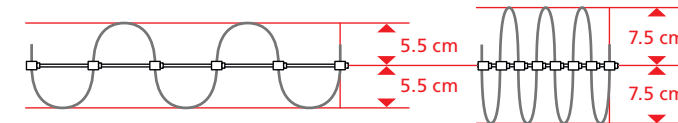
A: Depth of the 'Curve system with a 12 cm wave.



B: Depth of the 'Curve system with a 14 cm wave.



C: Depth of the 'Curve system with a 16 cm wave.



1.4 CALCULATING MATERIAL REQUIREMENTS. You can use the number of gliders on the 'Curve cord to reference how much material you will need for the chosen wave length (A, B or C) from the dimensions table. The dimensions already include 7 cm for the two ends of the system (3.5 cm at each end). All you have to do is add the amount of material you need to sew the seams.